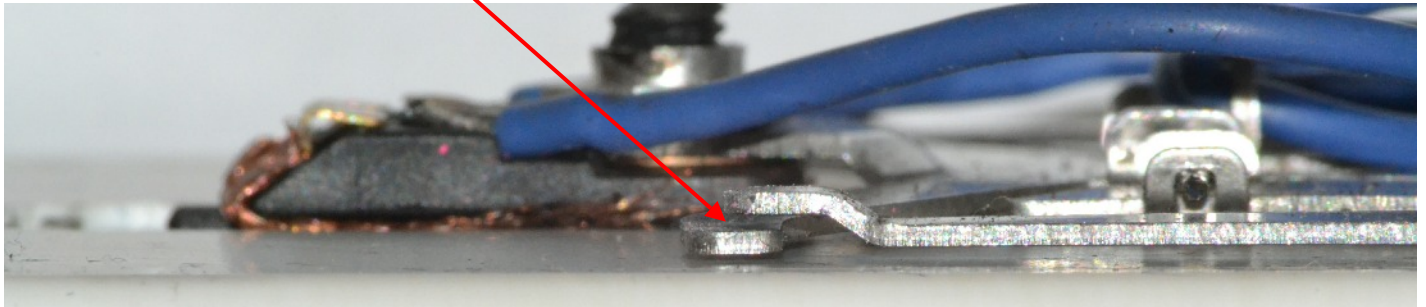


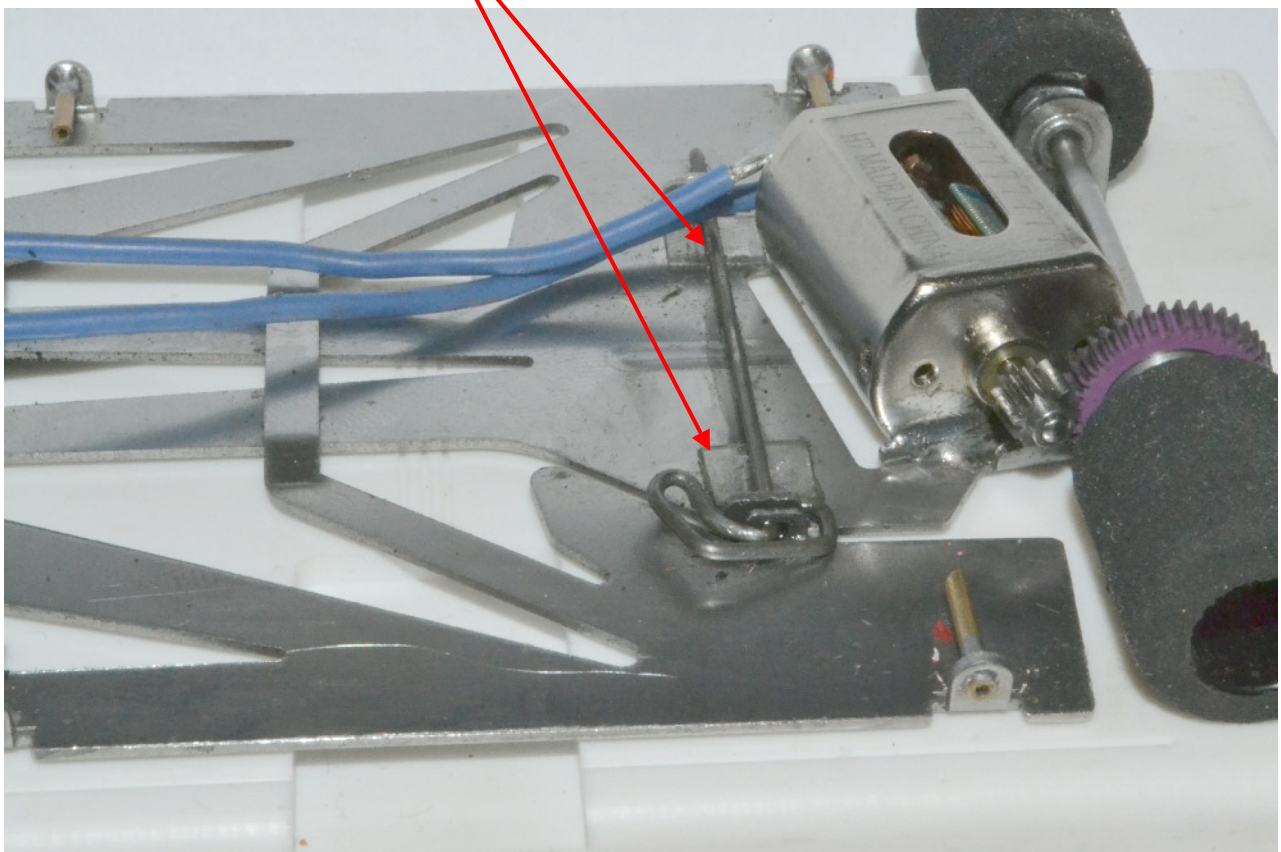
The JK Aeolos Chassis

As many are aware the pre-release testing on this chassis was conducted at Raceway 81.

This chassis departs from the “usual” design of production chassis in that the front Pan Horns are designed to sit clear of the front T bar, using the supplied front J bar. (see the photo below). This essentially allows free movement of the pans and also damps any vibrations caused by the front T bar coming in contact with irregularities on the track surface and dampening the effects of said vibrations to the pan section. So it's not a bright idea to get out your hammer and try and flatten the pan fingers so they sit directly on top of the front T bar!



At the rear, we found the best set up to be using the supplied rear J bar and just adding two small squares of self adhesive bullet proofing (approx. 0.012” thick) as indicated.



ENJOY RACING THIS GREAT CHASSIS!